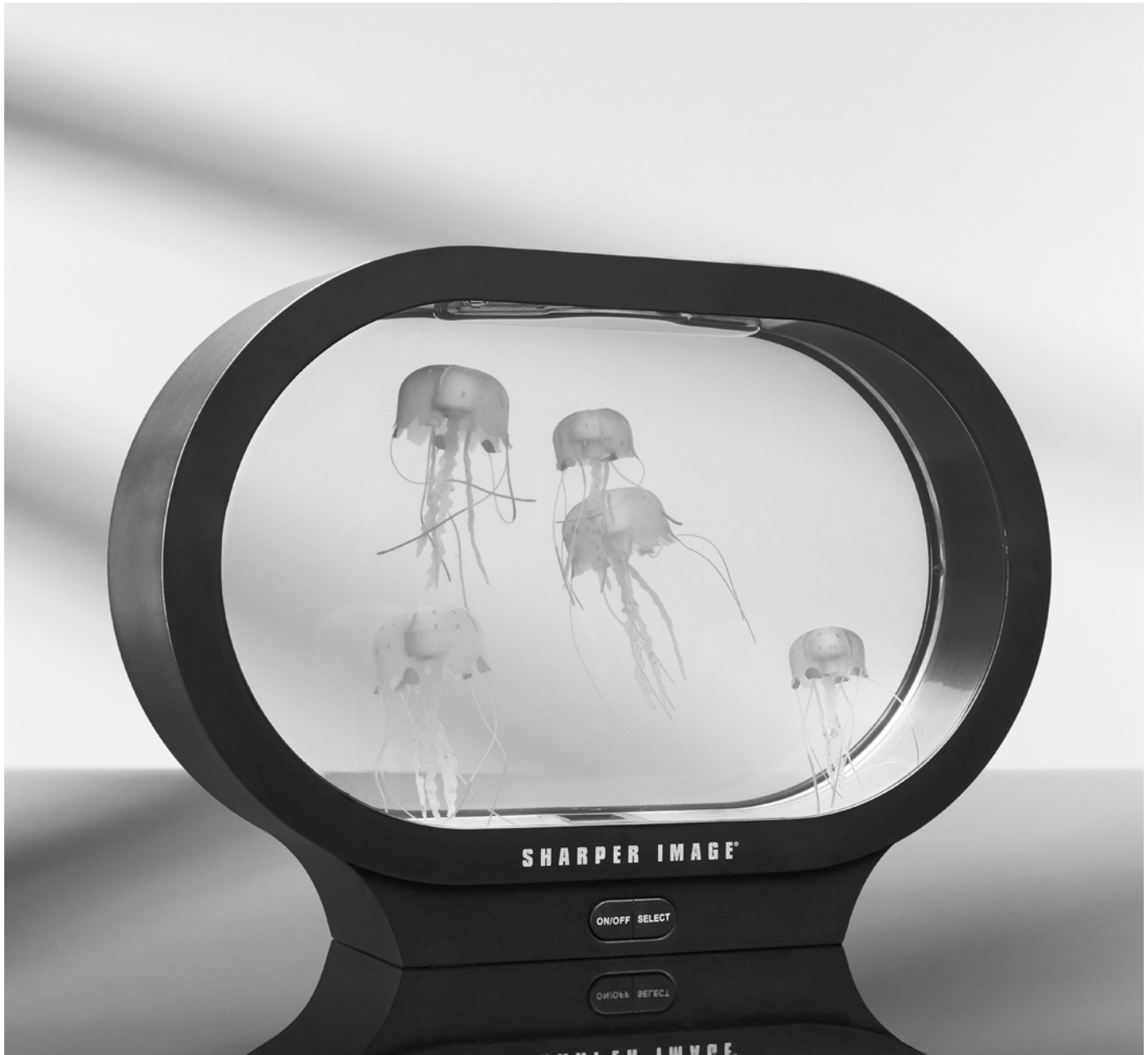


SHARPER IMAGE®

FANTASY JELLYFISH AQUARIUM

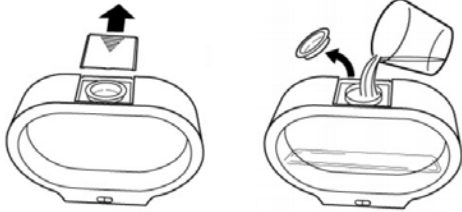
Item No. 207130

User Guide



Thank you for purchasing the Sharper Image Fantasy Jellyfish Aquarium. Please take a moment to review these instructions and retain them for future reference.

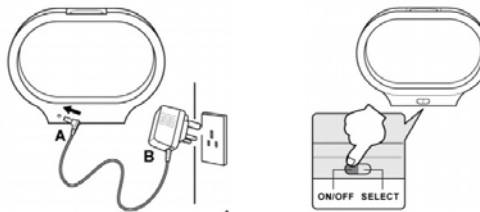
1. FILLING THE TANK



- Remove the plastic cap
- Remove the rubber plug
- Fill the aquarium to the top with tap water or distilled water [recommended]

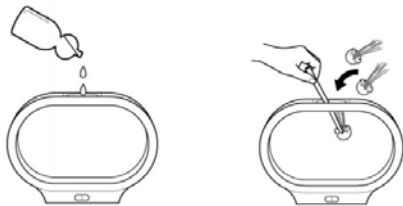
- When filling your aquarium, add water directly into opening. Make sure water does not seep outside of the circle opening into the sides of the aquarium
- If water seeps into the sides of the aquarium it will leak out of the bottom until all of the water is drained from the sides. It is recommended to fill and leave the aquarium in your sink for approximately 45 minutes until excess water has drained. Wipe the unit off before plugging into an AC outlet

2. PLUGGING IN THE DEVICE



- Connect A end to the base
- Plug B end into an AC outlet
- Turn on the switch

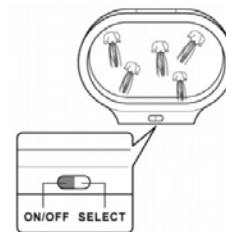
3. ADDING THE LIFELIKE JELLYFISH



- Add 2-3 drops of liquid dish washing soap to the water in the aquarium
 - Place the jellyfish upside-down in the filled aquarium. **Note:** Allow the aquarium to run for at least 30 seconds before adding the jellyfish.
- If the jellyfish are floating on top of the water they have air bubbles in them.



- Try to avoid air bubbles. If necessary, use a straw or a stick to break up any air bubbles
- Replace the rubber plug and the plastic cap



- Press the **ON** button to activate the lamp in automatic color-changing mode
- Press the **SELECT** button to toggle through the 5 different colors

IMPORTANT

- Handle the aquarium with care
- Always place the aquarium on a flat surface
- Use a soft cloth to dry the outside of the aquarium if needed
- Change the water occasionally if it appears dirty
- This unit will turn off automatically after 4 hours of operation. Please leave the unit OFF for 1 hour before reactivating the aquarium

WARRANTY / CUSTOMER SERVICE

Sharper Image branded items purchased from SharperImage.com include a 1-year limited replacement warranty. If you have any questions not covered in this guide, please call our Customer Service department at 1 (877) 210-3449. Customer Service agents are available Monday through Friday, 9:00 a.m. to 6:00 p.m. ET.

SHARPER IMAGE®

The SHARPER IMAGE® name and logo are registered trademarks.

©Sharper Image. All Rights Reserved.

SHARPER IMAGE®

FANTASY JELLYFISH AQUARIUM

QUICK START GUIDE

1. Carefully fill tank with water.
2. Add Jellyfish into water.
3. Turn Aquarium **ON**.

HELPFUL TIPS:

- When filling your aquarium, add water directly into opening, making sure water does not seep outside of the circle opening, into the sides of the aquarium
- If water seeps into sides of aquarium, it will leak out of the bottom until all water is drained from the sides
- After aquarium is turned on, wait for bubbles to dissolve
- It may take 24-48 hours for bubbles to dissolve and jellyfish float and swim properly
- Use straw/stick to shake jellyfish in water in order to remove bubbles from jellyfish's body
- If bubbles have all dissolved and aquarium is turned to **OFF** mode, the jellyfish will sink to bottom until aquarium is powered back **ON** and ready to be enjoyed again

[Click Here to Read More....](#)

[Mobile friendly optimized manual:](#)

[Sharper Image Fantasy Jellyfish Aquarium Instructions](#)